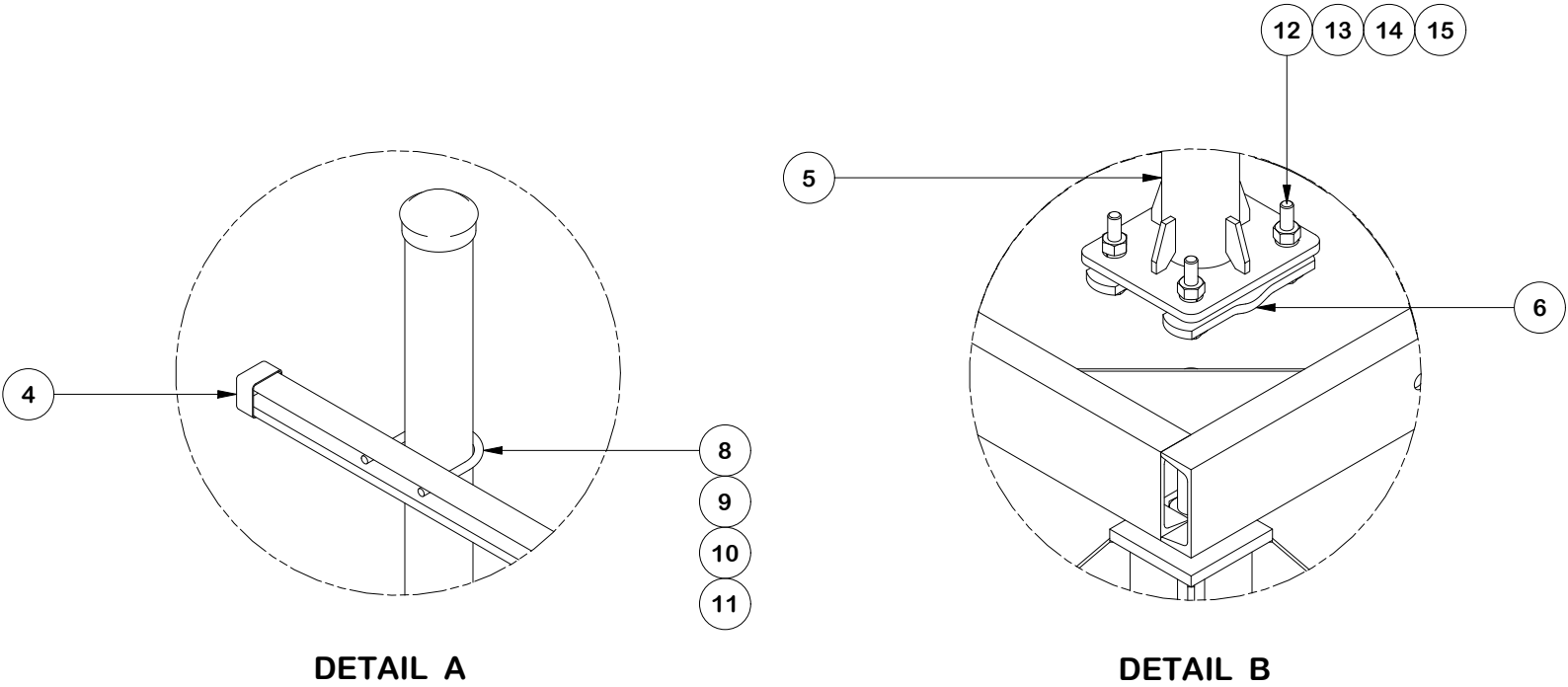


PARTS LIST						
ITEM	QTY	PART NO.	PART DESCRIPTION	LENGTH	UNIT WT.	NET WT.
1	1	X-MEP57	5' X 7' MODULAR EQUIPMENT RACK BASE		397.29	397.29
2	4	X-MPADS	1' SQAURE MODULAR PLATFORM FOOTPAD		17.50	70.01
3	5	UNT5	1/8" MILL PLATE (Fy = 35 KSI MIN)	60 in	10.19	50.95
4	10	UNICAP	UNISTRUT END CAP		0.03	0.32
5	2	X-SAMAST-6	6' STANDOFF ARM MAST WELDMENT		23.19	46.38
6	4	X-115765	5" V-CLAMP	7 1/16 in	1.03	4.10
7	2	PC278	2-7/8" FENCE POST CAP		0.46	0.92
8	10	X-UB3300	3/8" X 3-1/2" X 4-3/4" X 2" U-BOLT (HDG.)		0.73	7.32
9	20	G38FW	3/8" HDG USS FLATWASHER		0.01	0.23
10	20	G38LW	3/8" HDG LOCKWASHER		0.01	0.13
11	20	G38NUT	3/8" HDG HEAVY 2H HEX NUT		0.03	0.68
12	8	G12065	1/2" x 6-1/2" HDG HEX BOLT GR5 FULL THREAD	6 1/2 in	0.41	3.28
12	8	G1203	1/2" x 3" HDG HEX BOLT GR5 FULL THREAD	3 in	0.22	1.74
13	8	G12FW	1/2" HDG USS FLATWASHER	3/32 in	0.03	0.27
14	8	G12LW	1/2" HDG LOCKWASHER	1/8 in	0.01	0.11
15	8	G12NUT	1/2" HDG HEAVY 2H HEX NUT		0.07	0.57
16	4	G1R-12	1" x 12" THREADED ROD (HDG.)	12 in	2.67	10.69
17	8	G1LW	1" LOCK WASHER		0.09	0.75
18	16	G1NUT	1" HDG HEAVY HEX NUT		0.47	7.52
TOTAL WT. #						603.19



FINISH:
HOT DIP GALVANIZED.

TOLERANCE NOTES

TOLERANCES ON DIMENSIONS, UNLESS OTHERWISE NOTED ARE:
SAWED, SHEARED AND GAS CUT EDGES ($\pm 0.030"$)
DRILLED AND GAS CUT HOLES ($\pm 0.030"$) - NO CONING OF HOLES
LASER CUT EDGES AND HOLES ($\pm 0.010"$) - NO CONING OF HOLES
BENDS AND ANGLES ARE $\pm 1/2$ DEGREE
ALL OTHER MACHINING ($\pm 0.030"$)
ALL OTHER ASSEMBLY ($\pm 0.060"$)

PROPRIETARY NOTE:
THE DATA AND TECHNIQUES CONTAINED IN THIS DRAWING ARE PROPRIETARY INFORMATION OF VALMONT INDUSTRIES AND CONSIDERED A TRADE SECRET. ANY USE OR DISCLOSURE WITHOUT THE CONSENT OF VALMONT INDUSTRIES IS STRICTLY PROHIBITED.

DESCRIPTION

5' X 7' MEP WITH H-FRAME

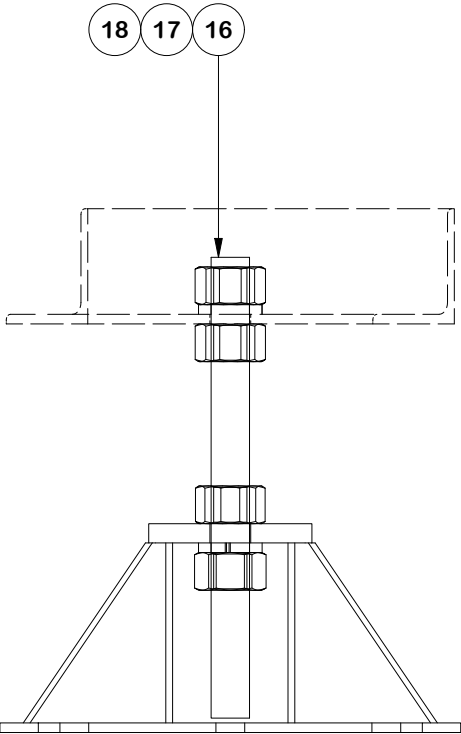
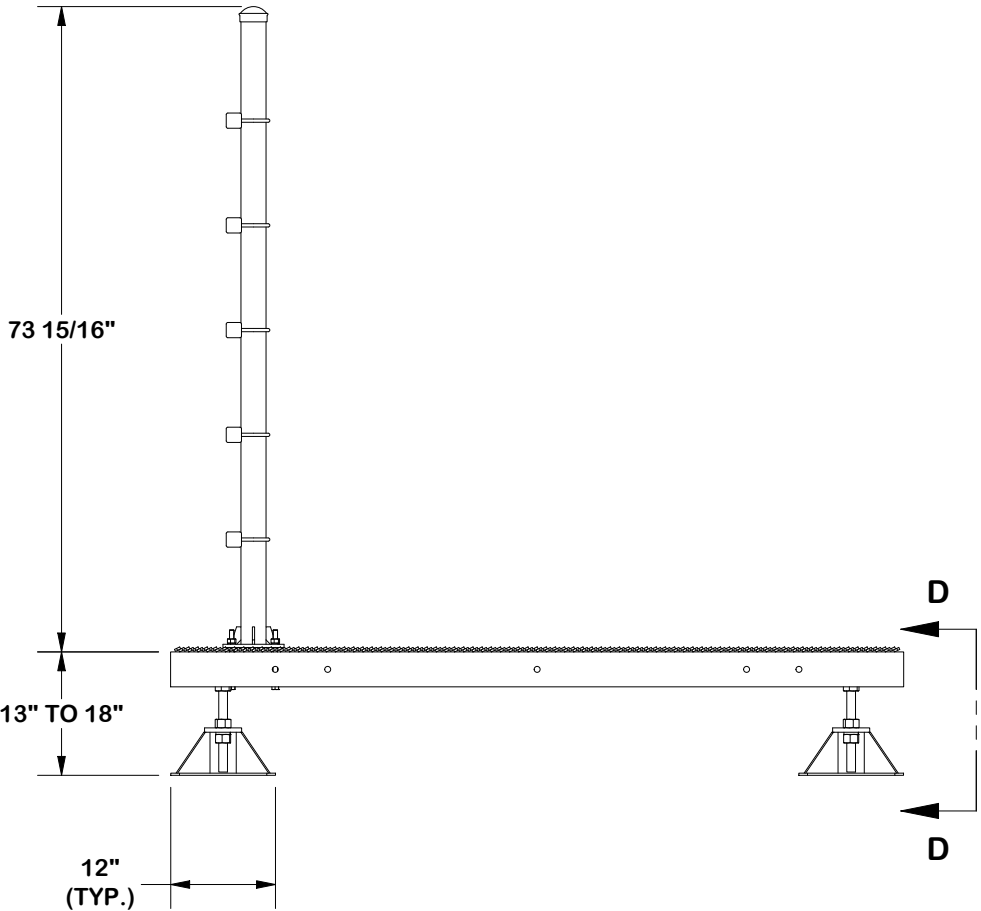
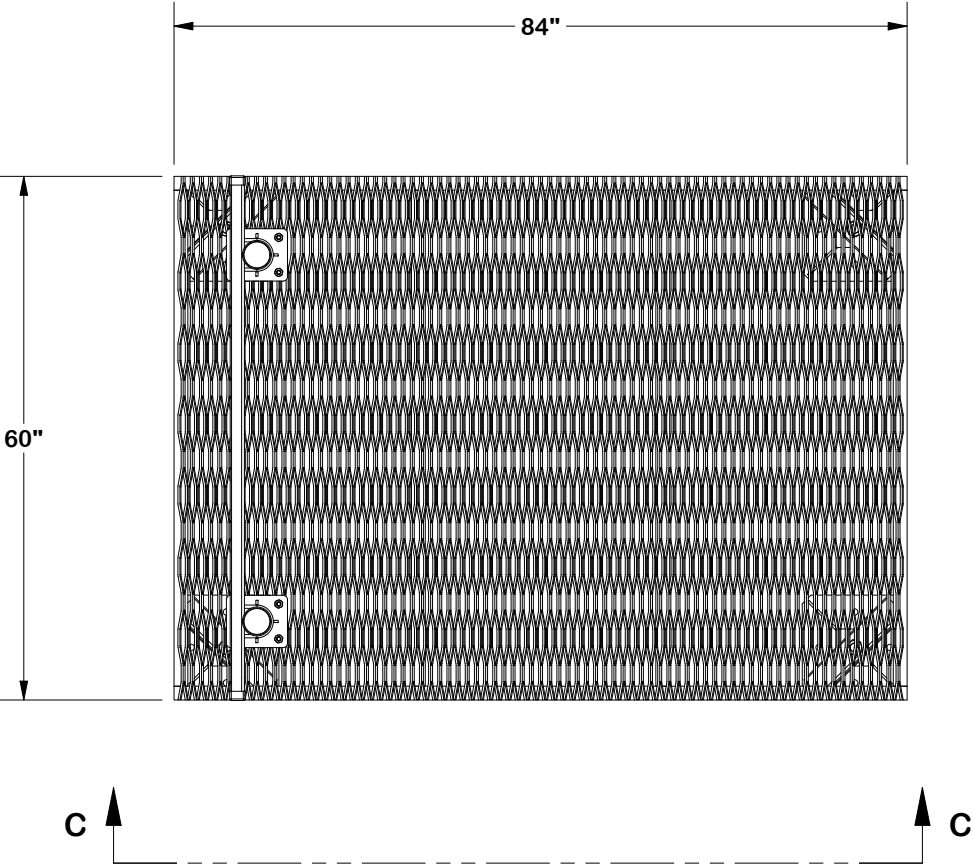
CPD NO.		DRAWN BY		ENG. APPROVAL	
		CMFL 6/27/2022		10/12/2020	
CLASS	SUB	DRAWING USAGE		CHECKED BY	
87	02	CUSTOMER		BMC 10/12/2020	



Locations:
New York, NY
Atlanta, GA
Los Angeles, CA
Plymouth, IN
Salem, OR
Dallas, TX
Tampa, FL

Engineering
Support Team:
1-888-753-7446

PART NO.	MEP57-7SHF
DWG. NO.	MEP57-7SHF



VIEW C-C

TOLERANCE NOTES

TOLERANCES ON DIMENSIONS, UNLESS OTHERWISE NOTED ARE:
SAWED, SHEARED AND GAS CUT EDGES ($\pm 0.030"$)
DRILLED AND GAS CUT HOLES ($\pm 0.030"$) - NO CONING OF HOLES
LASER CUT EDGES AND HOLES ($\pm 0.010"$) - NO CONING OF HOLES
BENDS AND ANGLES ARE $\pm 1/2$ DEGREE
ALL OTHER MACHINING ($\pm 0.030"$)
ALL OTHER ASSEMBLY ($\pm 0.060"$)

PROPRIETARY NOTE:
THE DATA AND TECHNIQUES CONTAINED IN THIS DRAWING ARE PROPRIETARY INFORMATION OF VALMONT INDUSTRIES AND CONSIDERED A TRADE SECRET. ANY USE OR DISCLOSURE WITHOUT THE CONSENT OF VALMONT INDUSTRIES IS STRICTLY PROHIBITED.

DESCRIPTION

5' X 7' MEP WITH H-FRAME

CPD NO.		DRAWN BY CMFL 6/27/2022		ENG. APPROVAL 10/12/2020	
CLASS 87	SUB 02	DRAWING USAGE CUSTOMER		CHECKED BY BMC 10/12/2020	

SITE PRO 1

A valmont COMPANY

Locations:
New York, NY
Atlanta, GA
Los Angeles, CA
Plymouth, IN
Salem, OR
Dallas, TX
Tampa, FL

Engineering
Support Team:
1-888-753-7446

PART NO.	MEP57-7SHF
DWG. NO.	MEP57-7SHF